



## INSTALLATION GUIDELINE

# RASCOTec Injection Channel

### GENERAL

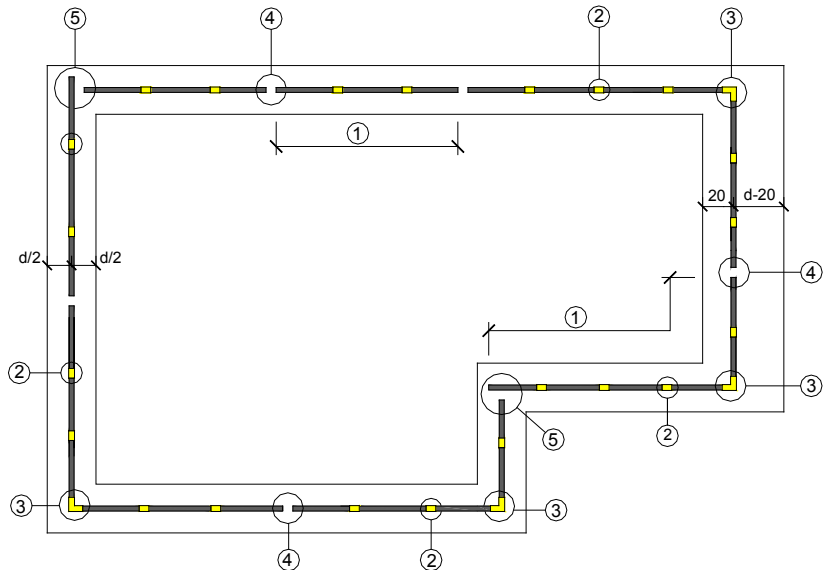
- always fix channels to cementitious base
- do not fix to expanded metal or support plates for reinforcement units
- there is no need to remove drill dust
- ensure that entire injection channel fits tightly to base
- base should be swept clean and at least 24 hours old

### PERSONAL PROTECTIVE EQUIPMENT

- wear suitable protective gloves and goggles

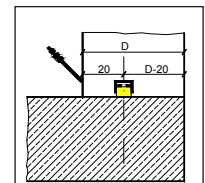
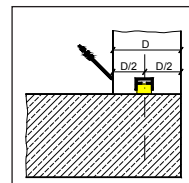


### FIXING SCHEME



### INCORPORATION (GROUND SLABS, SUSPENDED SLABS, WALLS)

- for element thicknesses up to 40 cm: along centreline of element
- for element thicknesses exceeding 40 cm: 20 cm from grouting side



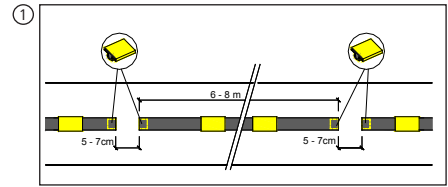
### FIXING

- position injection channel on swept base
- drill all specified holes with 6 mm bit
- fix using RASCOfix nail plugs (type 6/60)
- any specified holes not required shall be sealed (e.g. with adhesive tape)



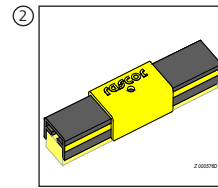
### GROUTING SECTION LENGTH

- the optimum grouting section length (i.e. continuous length for grouting) totals approx. 6-8 m



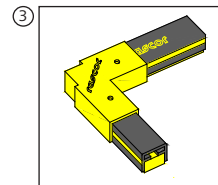
### CONNECTIONS WITHIN GROUTING SECTION

- tightly butt and fix injection channels
- cover joint with connector cap and fix



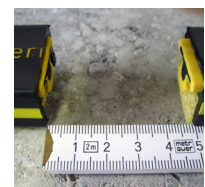
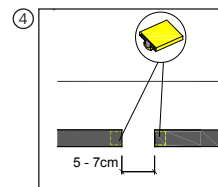
### 90° ANGLE WITHIN GROUTING SECTION

- connect injection channels with 90° angle and fix
- ensure continuity of the foam insert at the angle (i.e. channel foam shall directly abut angle foam block)



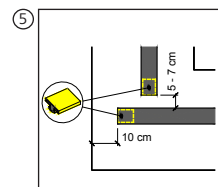
### GROUTING SECTION ENDS

- fit hydrophilic stoppers at grouting section ends
- leave 5-7 cm gap between grouting section ends
- mark grouting section ends



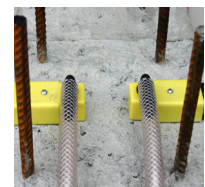
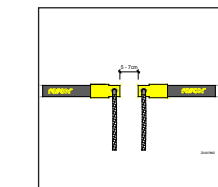
### GROUTING SECTION ENDS AT 90° ANGLE

- fit hydrophilic stoppers at grouting section ends
- leave 5-7 cm gap between grouting section ends
- mark grouting section ends



### GROUTING SECTION ENDS WITH CONNECTOR HOSE

- leave 5-7 cm gap between grouting section ends
- push on feeder caps and fix
- push on connector hose, carry to the outside and secure



### GROUTING SECTION ENDS WITH TARGET

- leave 5 - 7 cm gap between grouting section ends
- push on feeder cap and fix
- place target on grouting side within reinforcement and connect to injection channel
- mark exact location of target

